

# ISO 9001:2008 Quality Management System

***CERTIFIED TO ISO 9001:2008 BY LLOYD'S REGISTER QUALITY ASSURANCE  
APRIL 2009,  
CERTIFICATE NUMBER: UQA 0111601***

The Signal Exploitation and Geolocation Division made a strategic decision in 1998 to have the division quality management system certified to the stringent quality standards of ISO 9001.

ISO 9001 is an internationally recognized standard for quality Management Systems requiring third party certification and periodic surveillance audits to ensure continued compliance.

**Our Quality Management System is Applicable to Design, Development, Manufacture and Support of:**

- Signal Acquisition, Exploitation, and Geolocation Systems
- Surveillance and Tracking Systems
- Shipboard and Land-based Direction Finding Systems
- Software Engineering and Software products
- Post Delivery Product Servicing Consisting of:
  - ◆ Installation—Calibration—Repair—Upgrade—Training

**Our Quality Programs are:**

- Tailored to Customer's Requirements
- Monitored During the Project
- Continuously Improved

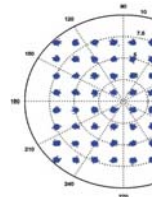
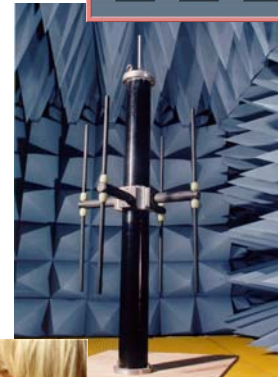
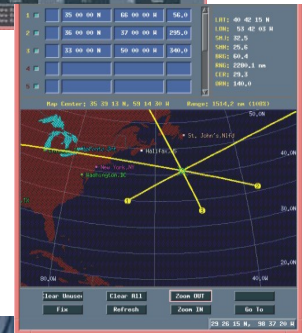


**SOUTHWEST RESEARCH INSTITUTE®**  
**Signal Exploitation and Geolocation Division**  
**P. O. Drawer 28510**  
**San Antonio, Texas 78228-0510**



# FOUNDATION OF OUR QUALITY SYSTEM

- Management Commitment
- Hardware and software design and development incorporating leading-edge technology in our products and services.
- Test equipment calibration using SwRI<sup>®</sup> calibration laboratory accredited to ISO/IEC 17025-1999 and ANSI/NCSL Z540-1-1994
- Positive document control through division and project web sites
- Staff involvement in process improvement
- 50 years of design, development, and manufacture for domestic and international commercial and government customers
- Independent quality assurance organization monitors compliance
- A history of commitment to customer satisfaction



for more information contact:

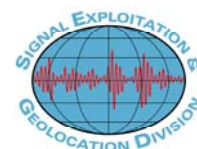
Robert C. Grover, Director, Productions & Operations

ISO Management Representative

Ph: 210/522-2996

Fax: 210/522-2709

Email: [b.grover@swri.org](mailto:b.grover@swri.org)



01P006B/M