

# Marine Systems

## Design, Analysis, Development and Testing

Southwest Research Institute® (SwRI®) has supported the marine and offshore industries for more than 40 years. Expert staff members can provide design, analysis, and experimental or numerical modeling to achieve optimum results. SwRI's laboratories and facilities, augmented by outdoor test areas, are served by a network of computerized data acquisition and analysis equipment.

### KEYWORDS

Marine Engineering

Ocean Engineering

Structural Systems  
Engineering

Modeling and  
Simulation

Test and Evaluation

Fabrication

Life Support Systems

Pressure Vessels

Manned Submersibles

Remotely Operated  
Vehicles (ROV)

Autonomous  
Underwater Vehicles  
(AUV)

PHVO-1

### EXPERTISE

#### *Technical Disciplines*

- Marine engineering
- Ocean engineering
- Structural systems engineering
- Rapid response engineering, prototyping and simulation
- Testing and assessment
- Materials selection
- Application of advanced materials and composites to marine and subsea systems
- Corrosion protection and detection
- Operations and training

#### *Marine Systems*

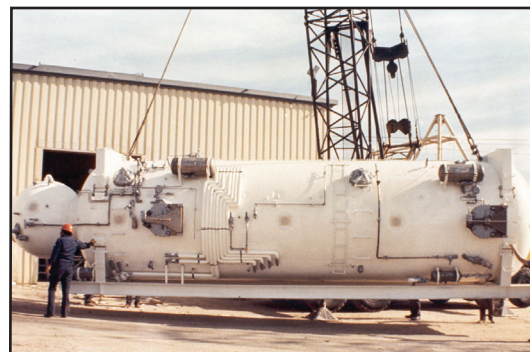
- Manned, unmanned, remotely operated and autonomous vehicle systems
- Surface and subsea structures and structural systems
- Manned and unmanned pressure vessels
- Deep ocean pressure vessels
- Large, full-scale and small-scale models
- Vehicle propulsion and hydrodynamics
- Power generation and transfer
- Subsea data transfer

#### *Life Support Systems*

- Closed and semi-closed circuit diving systems
- Surface-supplied diving systems
- Saturation diving systems
- Scuba diving systems
- Damage control / first responder breathing gas systems
- Hyperbaric medical treatment systems
- Thermal protection

#### *Marine Salvage*

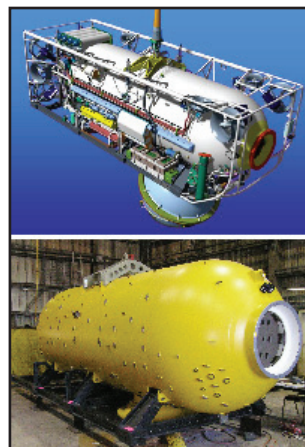
- Marine salvage engineering
- Petroleum offloading
- Surface-supplied diving – air and mixed gas
- Saturation diving – air and mixed gas



SwRI converted this deck decompression chamber from a double-lock to a triple-lock configuration and, through analysis, upgraded its rating from 900 to 1,200 feet of salt water (fsw).



SwRI built the Kokanee submarine, the largest unmanned sub in the world (roughly 100 feet long and 10 feet in diameter), to simulate the acoustic and hydrodynamic characteristics of the Seawolf Class attack submarine. All of its structures, foundations, and control panels were designed and fabricated at SwRI.



SwRI designed, fabricated and tested the pressure hull system, support frame and lifting bridle for the US Navy's new submarine rescue vessel, the Pressurized Rescue Module System (PRMS). To enable operation at depths of 2,000 fsw and to minimize system weight, HY-100 steel was used for the pressure hull systems. The lifting bridle was machined from a single 6Al-4V ELI (Grade 23) titanium alloy forging.

D015113\_0069

#### *Welding and Fabrication*

- SMAW, TIG, GTAW, SAW
- Low-alloy high-strength steel
- Titanium alloy (6Al-4V and 6Al-4V ELI)
- INCONEL
- Aluminum



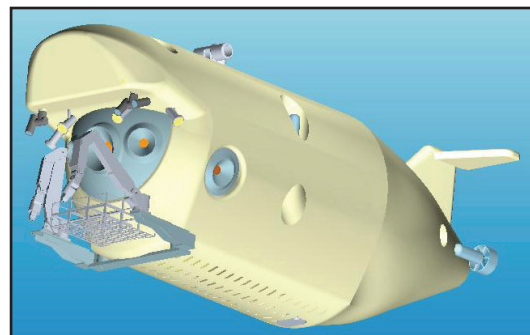
Benefiting government,  
industry and the public  
through innovative  
science and technology

## Design Codes

- American Bureau of Shipping
- U.S. Coast Guard
- Det Norske Veritas
- American Society of Mechanical Engineers
- American Welding Society
- American National Standards Institute
- American Petroleum Institute
- Military Specifications

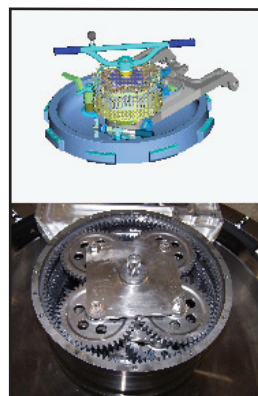
## Processes and Procedures

- Quality assurance and inspection
- Engineering and design
- Failure mode effects analysis (FMEA)
- System safety and hazard analysis
- Manufacturing and fabrication
- Testing and evaluation
- Operations – systems and facilities
- Maintenance and repair – planning and performance



DO 15775

SwRI conducted the New Alvin Deep Submersible Conceptual Development Study for the Woods Hole Oceanographic Institution (WHOI). Based on the study results, the National Science Foundation has authorized WHOI to proceed with design and fabrication of the 6Al-4V ELI titanium alloy pressure hull and the vehicle ballast and trim systems.



SwRI designed, fabricated and tested the hatch for the submarine rescue vessel, the Pressurized Rescue Module System (PRMS). This effort included successful development of the two PRMS hatch operating gearboxes.

DO 15776



Southwest Research Institute is an independent, nonprofit, applied engineering and physical sciences research and development organization using multidisciplinary approaches to problem solving. The Institute occupies 1,200 acres in San Antonio, Texas, and provides more than 2 million square feet of laboratories, test facilities, workshops and offices for more than 3,100 employees who perform contract work for industry and government clients.

We welcome  
your inquiries.

For additional  
information,  
please contact:

Alan P. Steiner, Sr. Specialist  
Ocean Simulation & Product Testing  
(210) 522-3771  
alan.steiner@swri.org

Joseph E. Crouch, P.E., Manager  
Marine and Offshore Systems  
(210) 522-4295  
joseph.crouch@swri.org

Structural Engineering Department  
Mechanical Engineering Division  
Southwest Research Institute  
6220 Culebra Road (78238-5166)  
P.O. Drawer 28510 (78228-0510)  
San Antonio, Texas

www.swri.org  
www.structural-engr.swri.org