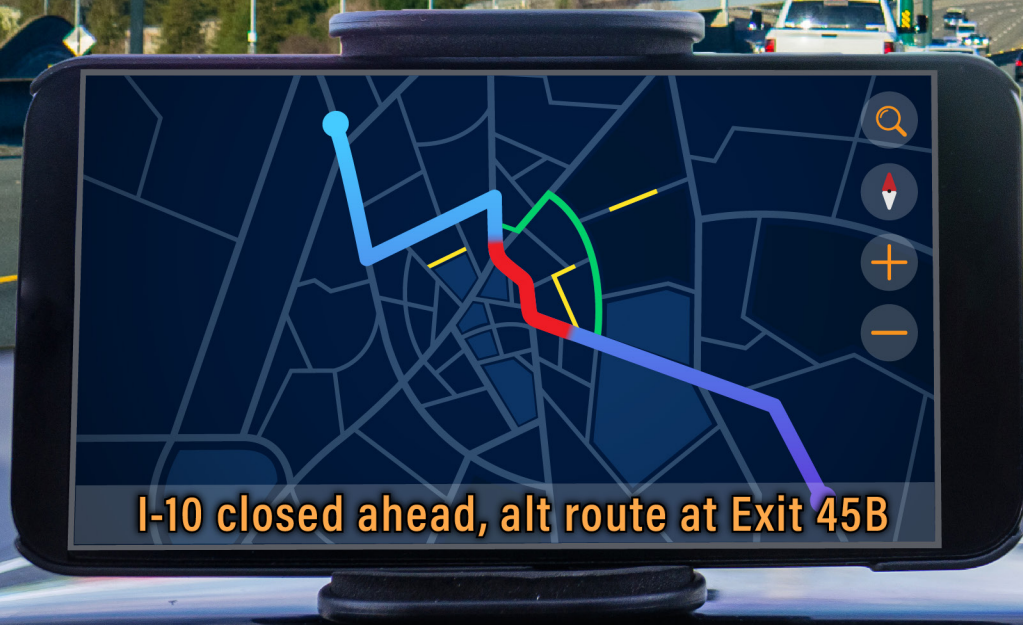


SOUTHWEST RESEARCH INSTITUTE®

ActiveICM



I-10 CLOSED AHEAD,
ALT ROUTE AT EXIT 45B



ActiveICM

ActiveICM is an Integrated Corridor Management (ICM) platform that features active traffic management functionality capable of diverting traffic to underutilized arterials during major traffic incidents. Featuring a customizable decision support system, ActiveICM can easily add and modify rules to incorporate expanding ITS infrastructure and technology.

ActiveICM has simulation software integration to help predict the outcome of incident response plans. In addition, the system has support for artificial intelligence-based decision making to enhance operator response. Southwest Research Institute® (SwRI®) is committed to improving roadway safety and mobility by improving the recommendation of effective incident responses.



We welcome your inquiries.
For more information, please contact:

Sam Burnett
210.522.3586
samuel.burnett@swri.org



SOUTHWEST RESEARCH INSTITUTE

Southwest Research Institute® is a premier independent, nonprofit research and development organization. With eleven technical divisions, we offer multidisciplinary services leveraging advanced science and applied technologies. Since 1947, we have provided solutions for some of the world's most challenging scientific and engineering problems.

210.522.6065

its@swri.org

Like. Share. Follow. Listen.



its.swri.org