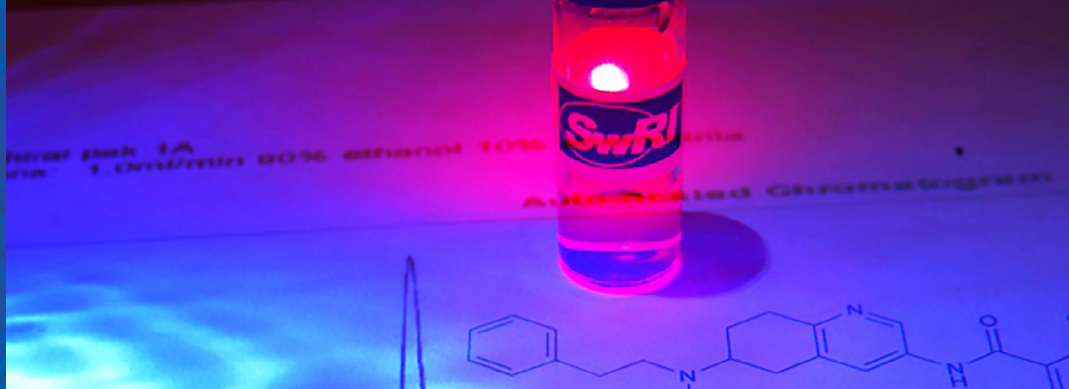




SOUTHWEST RESEARCH INSTITUTE



Small Molecule Drug Development From Concept to IND

Southwest Research Institute, Building 279
6220 Culebra Rd. • San Antonio, TX
October 8, 2018

Course Overview

This one-day course will provide the concept, strategies and tools for understanding chemistry, manufacturing and control (CMC) decisions to support Investigational New Drug (IND) submission. The seminar consists of presentations based on actual experiences, a tour of SwRI's cGMP manufacturing facility and real-world group interaction exercise to help you practice tackling real drug development issues to support IND submission.

This course has been assembled for the beginner in CMC as well as the intermediate CMC professional who is looking for a refresher course in several aspects of CMC.

Course Benefits

This course allows you to understand the complex processes that are vital to successfully bringing a small molecule drug substance/drug product to market. You will also be able to recognize the critical challenges, decisions and consequences along the development path. Interact with experts and colleagues from a wide range of pharmaceutical industry disciplines and meet new colleagues working in drug development.

Cost

The course cost is \$375 per registrant. Visit pharmdev.swri.org to register. Contact varsin.archer@swri.org for academic rates. Space is limited to 30 participants.

Course Topics

- CMC introduction
- Technical Transfer and introduction to process chemistry
- Formulation and analytical development
- cGMP manufacturing
- Non clinical safety and efficacy
- IND submission
- Cost overview for all aspects of IND submission

For more information, please contact:

Varsin Archer

210.522.5197

varsin.archer@swri.org

