

## Mack T11 Engine Test

(ASTM D7156)

### Specifications

- Mack EO-N Premium Plus
- Mack EO-N Premium Plus 03
- API CI-4 Plus
- API CJ-4
- EO-O Premium Plus

### Objective

- Evaluate the viscosity increase and soot concentration (loading) performance of an engine lubricant in turbocharged, intercooled diesel engines equipped with exhaust gas recirculation (EGR) systems.

### Field Service Simulated

- High-soot loading applications, such as stop-and-go operation of heavy-duty engines equipped with EGR systems.

### Test Fixture

- 12 L Mack E-Tech V-MAC III with electronically controlled fuel injection, six electronic unit pumps, 2002 low-swirl cylinder heads, and cooled EGR.
- The engine is an open-chamber, in-line, six-cylinder, turbocharged, air-cooled compression ignition engine. The bore and stroke are 124 mm x 165 mm.

### Test Parameters

- The test engine is operated for 252 hours using 500 ppm sulfur diesel fuel with the following controlled parameters:
- Engine speed
- Fuel flow rate
- Intake air temperature
- Intake air CO<sub>2</sub> concentration
- Intake manifold temperature
- Oil gallery temperature

### Test Parts Evaluation

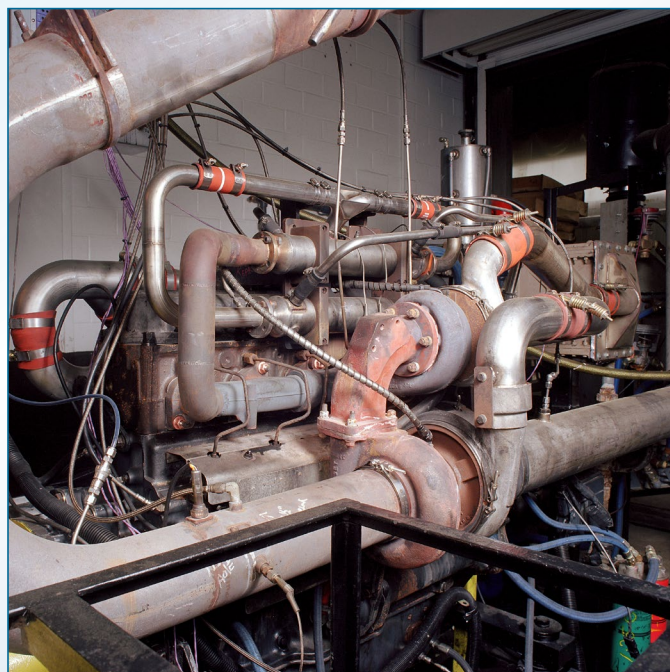
- Oil filter plugging is examined at the end of the test. Oil samples are taken every 12 hours and analyzed for soot content and viscosity.

### Used Lubricant Analysis

- Viscosity @ 100°C (ASTM D445)
- Viscosity by MRV (ASTM D6896)
- TAN (ASTM D664)
- TBN (ASTM D4739)
- Fuel dilution (ASTM D3524 modified)
- Shear stability (ASTM D7109)
- Wear metals (ASTM D5185)
- Soot by TGA

### Pass/Fail Criteria

Parameter	Pass Limit
4 cSt viscosity increase, % soot	3.5
12 cSt viscosity increase, % soot	6.0
15 cSt viscosity increase, % soot	6.7
180-hr used oil viscosity by MRV, cP	<25,000





◆ We welcome your inquiries.

For additional information,  
please contact:

**Robert Warden**

Research Engineer

(210) 522-5621

[robert.warden@swri.org](mailto:robert.warden@swri.org)



Benefiting government,  
industry and the public through  
innovative science and technology

Fuels and Lubricants Research Division

Southwest Research Institute

6220 Culebra Road • P.O. Drawer 28510

San Antonio, Texas 78228-0510

[swri.org](http://swri.org)

[lubricanttesting.swri.org](http://lubricanttesting.swri.org)



*Southwest Research Institute is an independent, nonprofit, applied engineering and physical sciences research and development organization using multidisciplinary approaches to problem solving. The Institute occupies 1,200 acres in San Antonio, Texas, and provides more than 2 million square feet of laboratories, test facilities, workshops and offices for nearly 3,000 employees who perform contract work for industry and government clients.*



facebook

twitter

LinkedIn